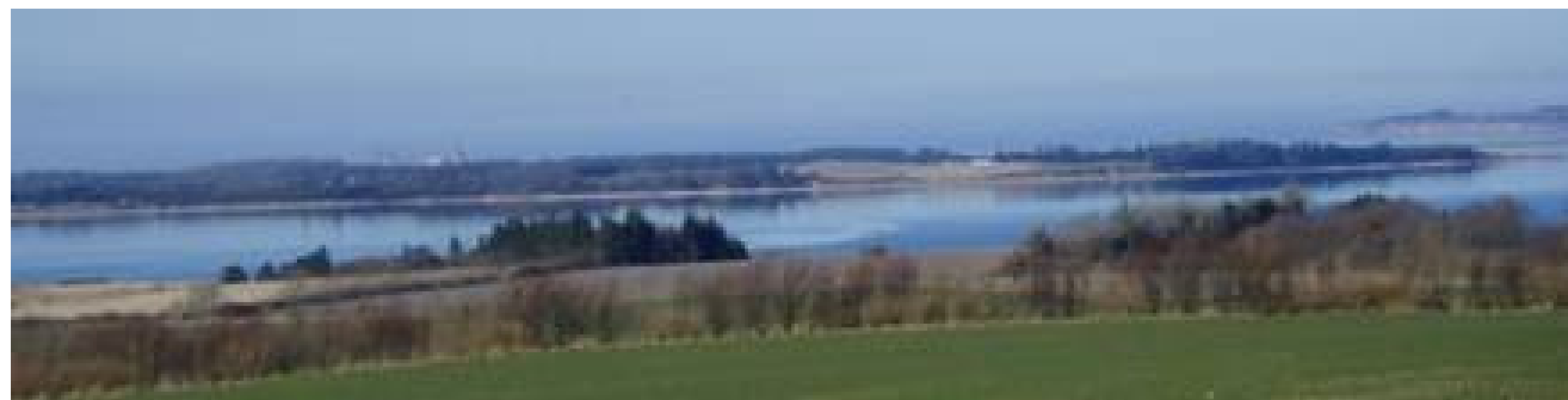




Project part-financed by the European Union (ERDF + TACIS) within the BSR INTERREG III B NP programme

HINTERLAND Vitality Check Examples from typology: Type 7 Selde in Denmark



Selde

Number of inhabitants: 366

Name of Municipality: Skive

Vorderland distance:

121 km northwest of Århus



A voice from Selde:

”The energy and motivation in our initiative is to stimulate a growing development of newcomers in the village.

Our task is to create opportunities and motivation for this to find a breeding ground and succeed.”

Kjeld Pedersen, member of volunteer development group.



Project part-financed by the European Union (ERDF + TACIS) within the BSR INTERREG III B NP programme

We are type 7!

What does it mean for our village and what do we have to do?

Strengthen the strengths!

Demography

- *Comparatively stable number of inhabitants*

Economy

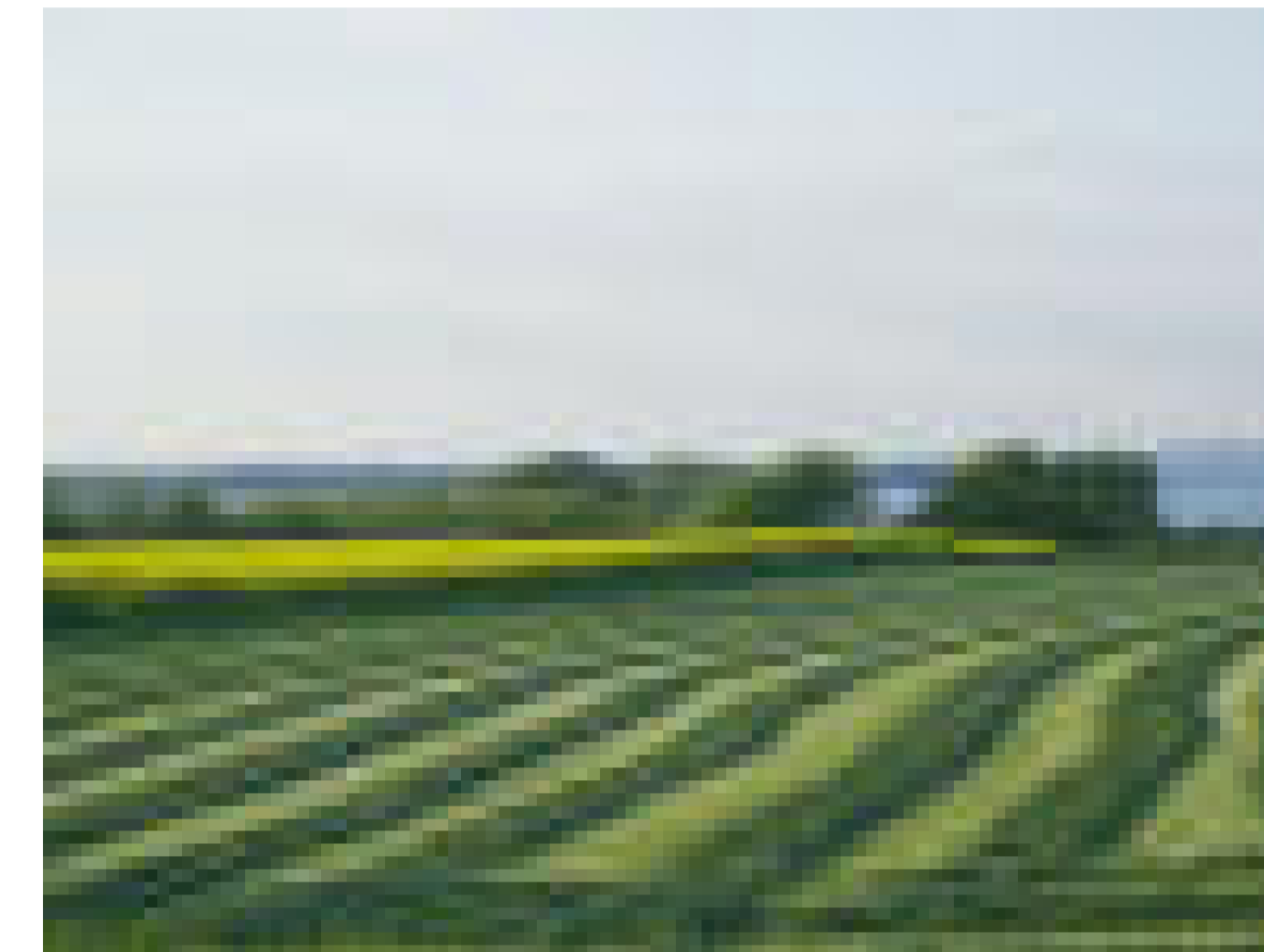
- *Very high employment rate*

Social Life

- *Many active clubs and associations*
– *and growing co-operation between them*

Reduce the risks!

- *A diminishing number of local enterprises*
- *Keep our village attractive for immigrants, especially young families!*



Coast line meadow near Selde



Newly renovated school



Project part-financed by the European Union (ERDF + TACIS) within the BSR INTERREG III B NP programme

We got type 7!

Look what we have achieved so far:

Calendar of activities in the last 10 years and Picture Gallery

2004 A former dairy is turned into a „circus factory“ – there is an annual circus school for children from all of Europe. An association has been established, and children from a large area train circus art every week. The Circus Factory also houses theatre shows and other cultural events.

2005 Extension of the school: new music room, classrooms and a service centre/library.

- A group of volunteers created a local park called „ the breathing hole“ – a place to meet, relax or be active.

2006 A total renovation of the home for the elderly

2007 A local savings bank opened a branch in Selde. The bank is actively involved in the development of Selde.

2007 Selde church is being renovated with new interior and decorations by an artist. The church has a size fit for concerts etc.



Midsummer celebration in the local park "the breathing hole"



Circus school



From the culture festival "Life in the Wilderness"



Project part-financed by the European Union (ERDF + TACIS) within the BSR INTERREG III B NP programme

We got type 7!

Our vision for the future:

Vision: “Selde – a good place to settle down”

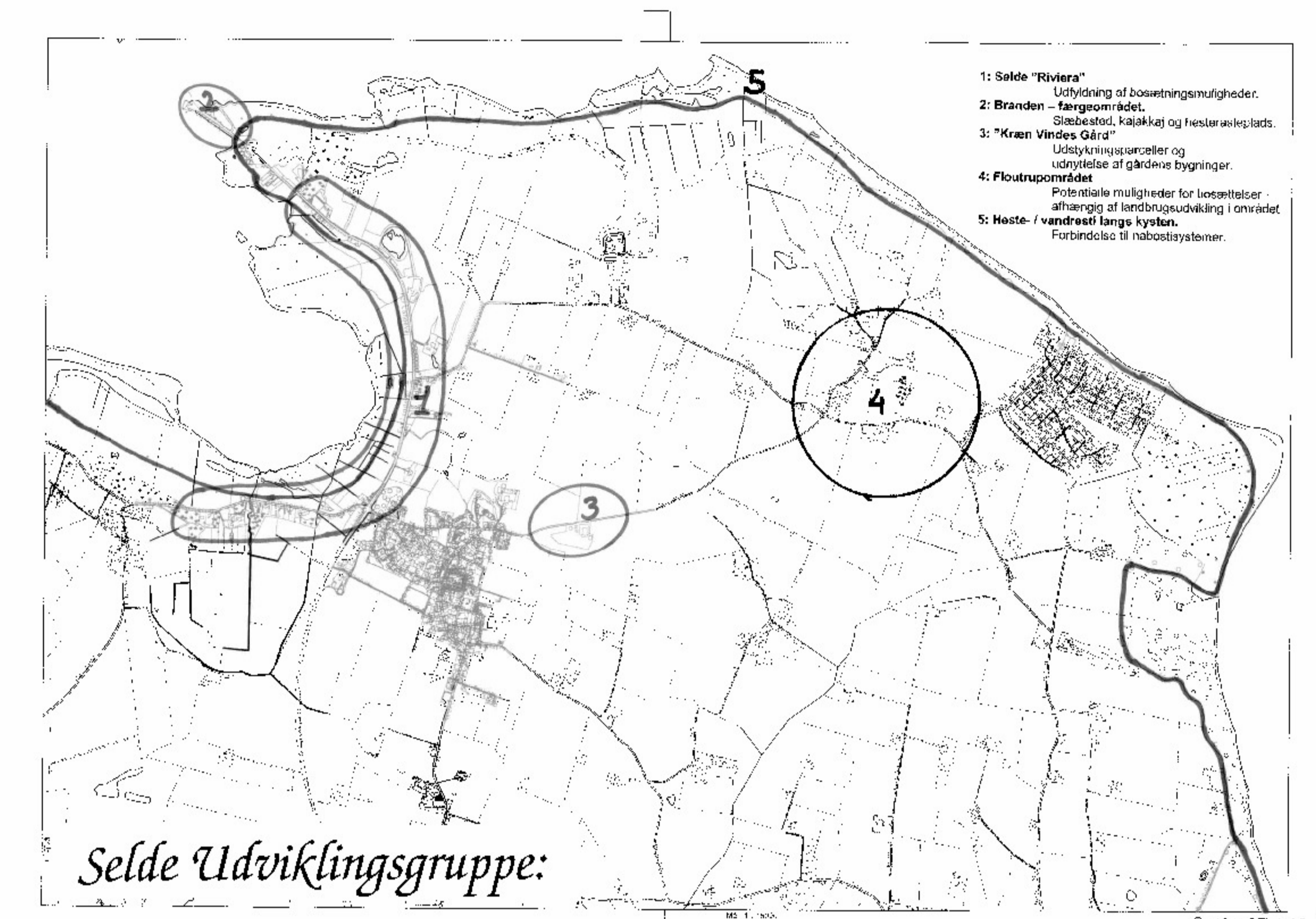
Next Projects:

- a group called “the development group” with the aim of creating development in Selde has been established. They are working on the following initiatives:

- To make attractive settlement-options in and around the village
- To initiate renovation of the houses of the village, also to condemnate useless buildings
- To Find investors for development initiatives
- To make use of the unique landscape close to the water

• Tasks for the group:

- To establish a non-profit private limited company “Development society of Selde and vicinity”
- To hold a citizens meeting and present the ideas of the group
- Initiate and support a number of projects already planned (develop local beach area, develop settlement areas, physical improvement of the village, seek to enlarge the current system of foot paths and horse paths
- To establish a platform for coordination of all these and other activities in the village



One of the active groups in Selde is working on ways to strengthen settlement. They have plans for new parcels and recreational paths along the coastline, sketched on this map.